

- Auto-Chlor System's proprietary WaterSaver™ design uses as little as .97 gallons per rack (1.94 per cycle)
- Powerful 1 HP pump delivers high pressure spray and mechanical cleaning action for single-pass cleaning performance
- Washes 76 dish racks per hour, up to 304 covers
- Built in water pressure regulator provides consistent water usage and cleaning results
- Exclusive fill-through-the-pump feature flushes and cleans the wash pump and spray system with every cycle
- External sump and screen provide easy access for cleaning
- Regularly scheduled 28-day service ensures sparkling results, minimizes mechanical problems and reduces operating costs
- Benefiting from more than 75 years of improvements and dishwashing experience and knowledge

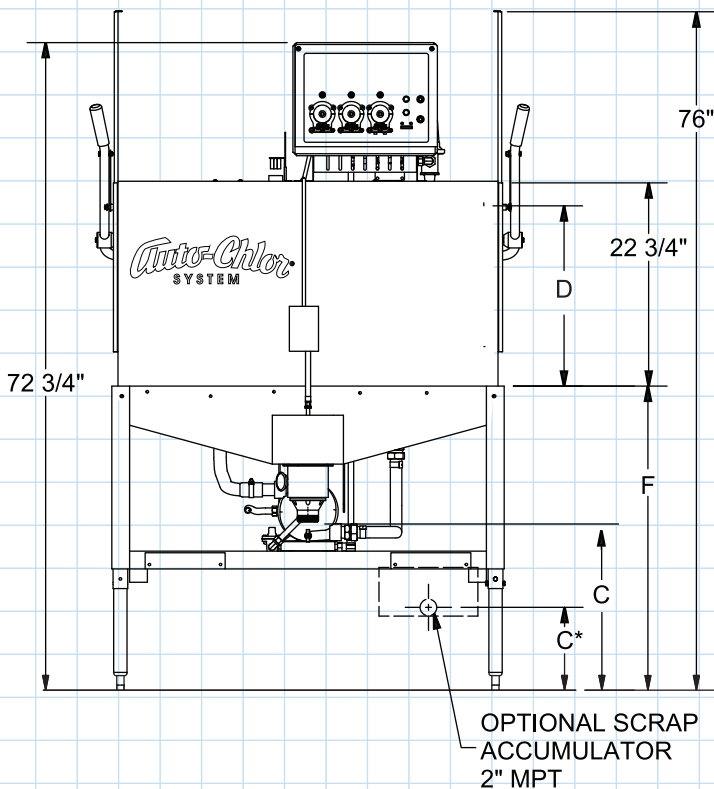
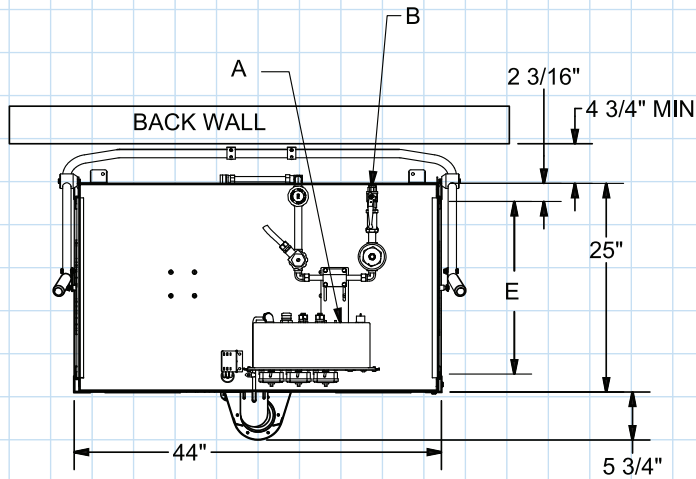


Energy Efficient

- Low temperature chemical sanitizing saves energy
- Exceeds Energy Star requirements
- No Booster Heater Required

**Total Service.
Total Satisfaction.**

Auto-Chlor®
SYSTEM
autochlor.com



Specifications

Standard 90 second cycle, 76 Rack/hr

- A - Electrical -115 VAC, 60Hz, 1 PH
 - 20A Dedicated Circuit Recommended
 - Connects to Grounded Wall Outlet or 1/2" Conduit depending on local building codes
 - B - Water Consumption .97 gal/rack (72.8 GPH)
 - Water Supply Flow Rate 7.5 GPM Minimum
 - Water Supply Temp 140°F Recommended (120° F Minimum Water Temperature)
 - Water Supply Connection 1/2" NPT female
 - Backflow protection provided by ASSE 1001 Vacuum Breaker
 - C - Drain Connection 2" MPT
 - 18 1/2" above floor
 - C* - Optional Scrap Accumulator
 - Connection 2" MPT
 - Centerline 7" above floor
 - D - Wash Cavity Clearance 18" Max Height
 - E - Rack Clearance - 20 1/8" between tracks
 - Rack Size 20" x 20"
 - F - Table Height at Machine Entrance 34"
- Available Options:
- Auto-Start
 - Leg Extensions : 3"
 - Vapor Removal System (VRX)
 - 72 second cycle, 94 Racks/hr (91.2 GPH)
 - Tall Hood 27" Max. Height Wash Cavity

Note: This unit does not produce heat or steam

Total Service. Total Satisfaction.

Auto-Chlor
SYSTEM

D2TimeSaver™

Double Rack • In Line • Low Energy • **WaterSaver™** Dishmachine



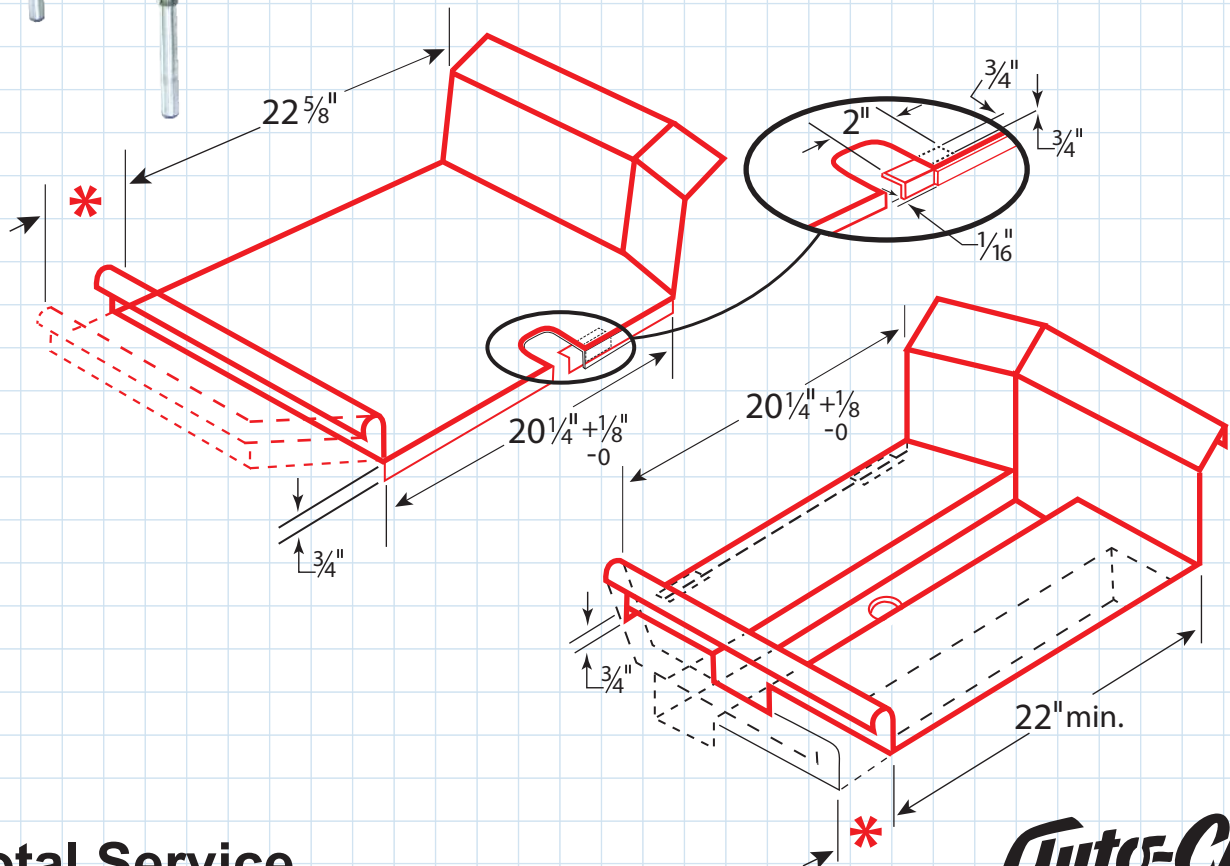
INLINE TABLE LAYOUT

Installation Specifications

*** NOTE:**

Dotted lines show how tables can be made to any desired width. Drain trough and/or pre-wash sink (dotted line) and some type of guide to center racks should be provided in "soiled dish" table.

Drawing shows right-to-left operation. For left-to-right feed, construct tables in reverse.



**Total Service.
Total Satisfaction.**

Auto-Chlor
SYSTEM
autochlor.com