

Auto-Chlor
SYSTEM

A6 EnergySaver

Single Rack Inline/Corner • High Temp or Chemical Sanitizing

Auto-Chlor brings the HEAT!

- Fast 45 second cycle cleans, rinses and sanitizes up to 72 racks per hour
- NSF rated to use as little as 0.69 gallons/rack
- TempWatch - temperature monitoring system – regulates rinse water to guarantee correct rinse temperatures cycle after cycle
- Capable of being a high temp or chemical sanitizing machine
- Integrated booster heater maintained by Auto-Chlor service technicians
- Three door design allows for use as an inline or corner dishwasher
- Powerful 3 hp pump delivers high pressure spray and mechanical cleaning action for single pass cleaning performance
- Integrated chemical controls and pumps
- Regularly scheduled 28-day service ensures sparkling results, minimizes mechanical problems and reduces operating costs
- Benefiting from more than 80 years of improvements and dishwashing experience and knowledge

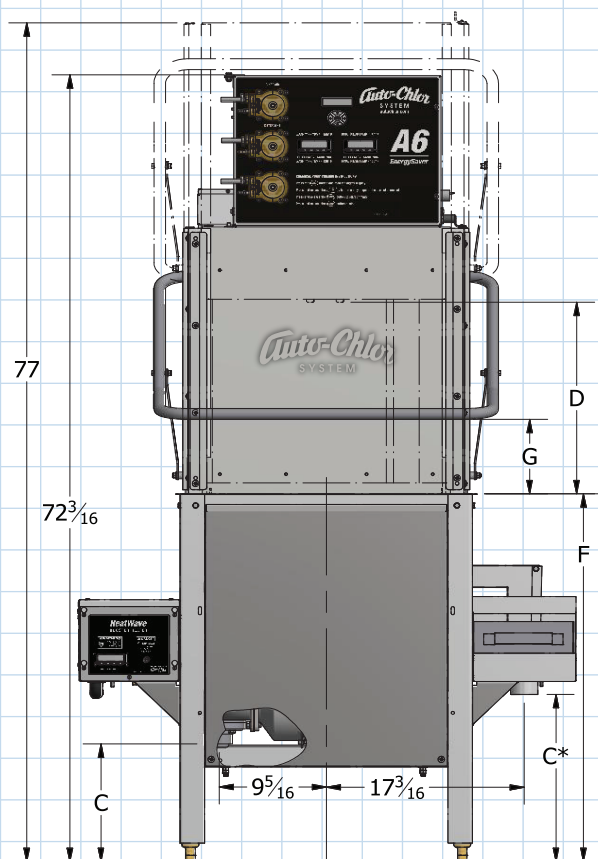
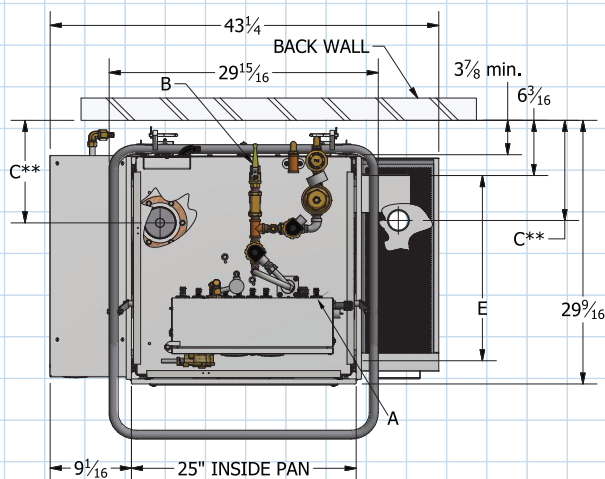


Energy Efficient

- Water saving fresh water rinsing saves energy
- Low temperature chemical sanitizing saves even more

**Total Service.
Total Satisfaction.**

Auto-Chlor
SYSTEM
autochlor.com



Specifications

Standard 45 second cycle, 72 racks/hr.

Dual Mode Sanitizing

Min. Wash Time
Min. Wash Tank Temp.
Min. Rinse Temp.
Min. Rinse Time

Chemical

35 Sec.
120°F
120°F
10 Sec.

High Temp

35 Sec.
150°F
180°F
10 Sec.

Sanitizing Chemical Chlorine

N/A

Min. Sanitizer Conc. 50 PPM

N/A

Rinse Pressure Controlled by Pressure Regulator.

Set Pressure: 20+/-5 PSI

A. Electrical

Ratings	208V/3Φ/60Hz	240V/3Φ/60Hz
Max Overcurrent Protection	60	60
Total Load	40	46
Booster Heater	12 kW	16 kW
Wash Tank Heater	9 kW	12 kW
Wash Pump 3 HP	230V / 8A	230V / 8A
Circuit Connections Required	(3 Hot, 1 Neutral, 1 Ground)	
Conduit and Wire sizing dependent on local codes and distance from panel Min. Wire Size.		

B. Water Consumption

.69 gal/rack (49.7 GPH)

Water Supply Flow Rate

4.1 GPM

Water Supply Connection

1/2" NPT female

Backflow Protection

ASSE 1001 Vacuum Breaker

C. Wash Tank Drain Connection: 2" NPT, 10 3/4" from floor

C.* Scrap Accumulator Drain: 2" NPT, 15 1/4" above floor

C.** Wash Tank and Scrap Accumulator Drain: 11 1/2" from wall

D. Wash Cavity Clearance: 18"

E. Rack Clearance: 20 1/16" between tracks

Rack Size: 20" x 20"

F. Table Height at Machine Entrance: 34"

G. Table Backsplash Clearance for Corner Installation: 7"

Available Options:

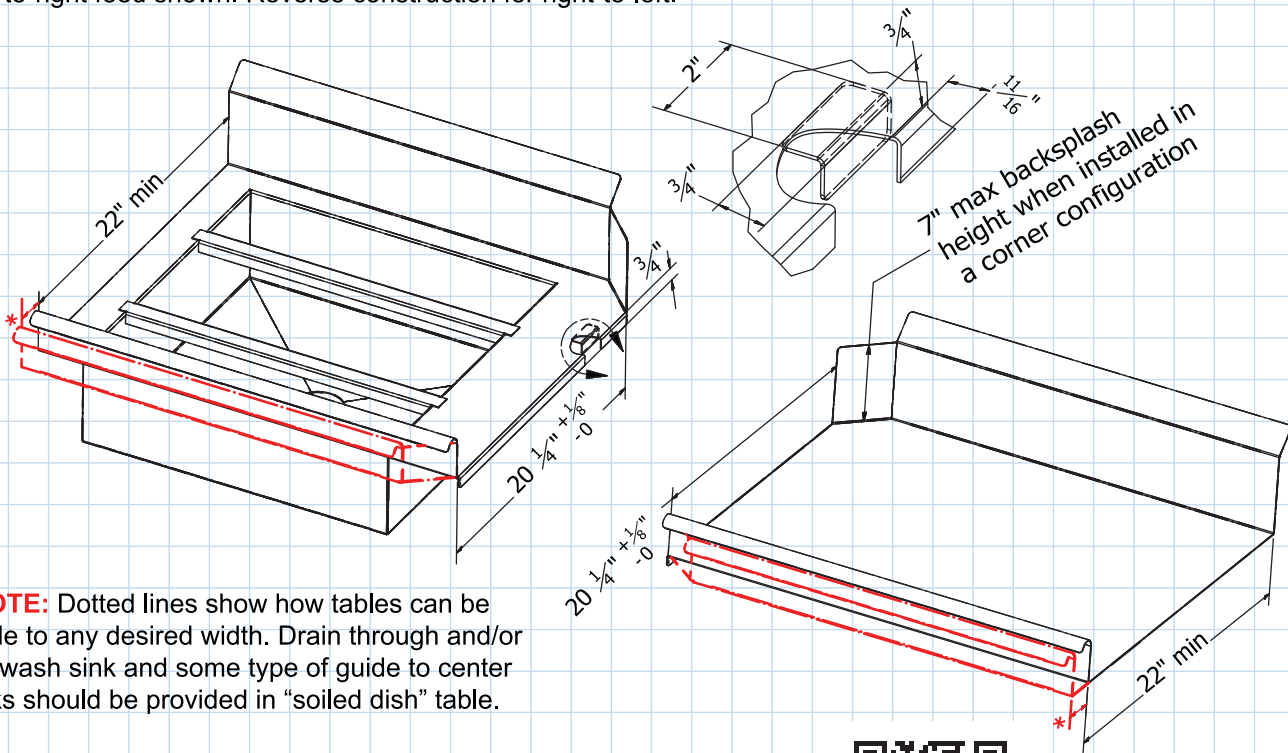
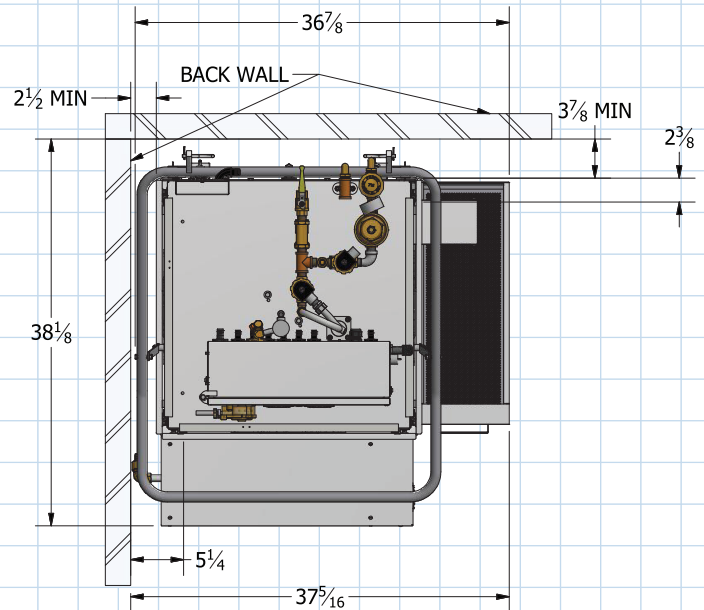
Vapor Removal System - VRX



Corner Configuration

Table Layout

Left-to-right feed shown. Reverse construction for right-to-left.



***NOTE:** Dotted lines show how tables can be made to any desired width. Drain through and/or pre-wash sink and some type of guide to center racks should be provided in "soiled dish" table.

