



AC-44

High Speed 44" Conveyor Dishwashing Machine

Reliable High Speed Dishwashing

The Model AC-44 Conveyor Type dishwashing machine incorporates a high speed conveyor with advanced mechanical technology to ensure effective warewashing in an easy to operate design.

- Key features separate the Model AC-44 from the competitive brands
- Low water usage, as little as .49 gallons per rack
- High speed conveyor, cleans an industry leading 244 racks per hour under optimum conditions and procedures
- Unique water curtain is designed to protect cleaned ware from dirty water
- Scrap accumulator keeps food, soil and debris away from clean wash water ensuring one pass results
- Dual rinse design, a pumped rinse curtain for removal of detergent residue & food soil; and a fresh water sanitizing rinse ensure sparkling results
- Automatic operation, simply insert rack, conveyor engages and wash cycle begins
- Captive wash arm end-caps allow operator to quickly set up and clean dishwashing machine after use
- Available in high or low temperature operation



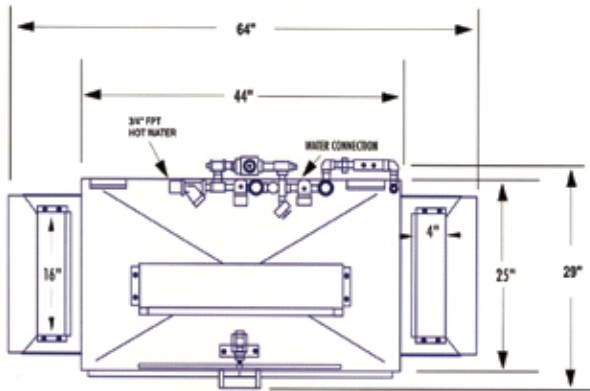
Energy Efficient

- Exceeds Energy Star requirements
- Water saving fresh water rinsing saves energy
- Low temperature chemical sanitizing saves even more

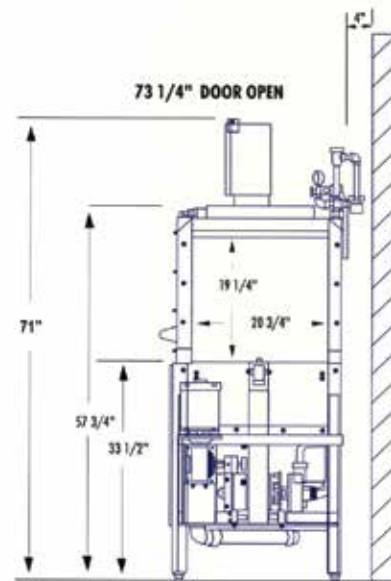
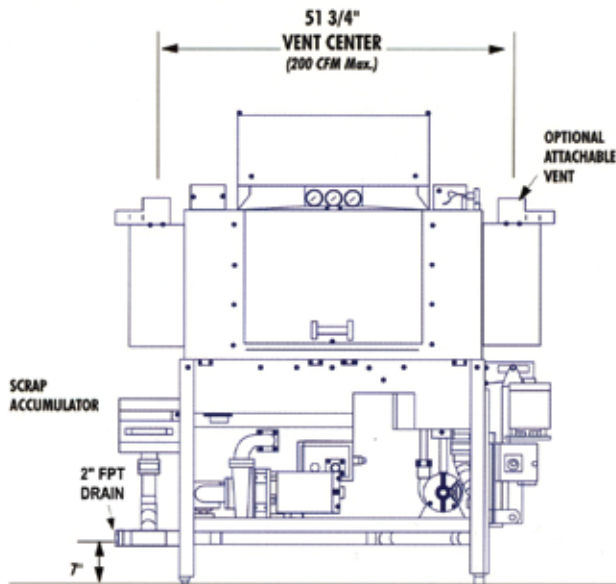
**Total Service.
Total Satisfaction.**

Auto-Chlor
SYSTEM
autochlor.com

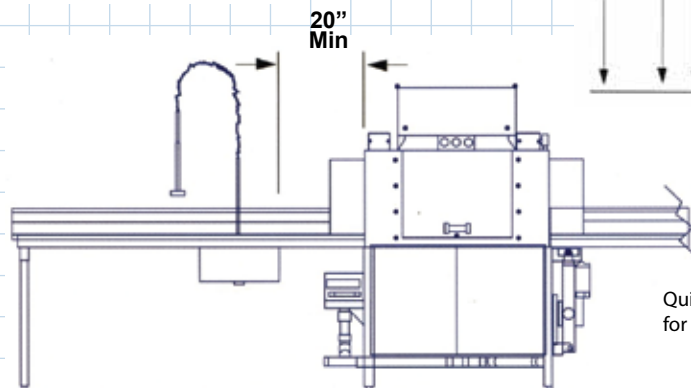
Top View (left to right operation)



Front View (left to right operation)



Clean Side View



Quick drains are not recommended for stage type dishwashing machines.

Specifications

NSF Rated Capacity (racks / hour)	244 racks/hr
Conveyor Speed	6.8 ft / min
Water Consumption	.49 gal / rack (1.8 liters)
Total Gallons Per Hour	120 gph
Final Rinse Temp (20 psi)	Low Temp 120°F
	High Temp 180°F
Electrical Power Supply	208 / 240V (3 PH, 60 Amp, 60 HZ)
Water Inlet	(3/4") F.P.T.
Drain Size	(2") F.P.T.
Height (with door open)	73 1/4"
Width (overall)	64"
Width, Table to Table	44"
Depth	29"