

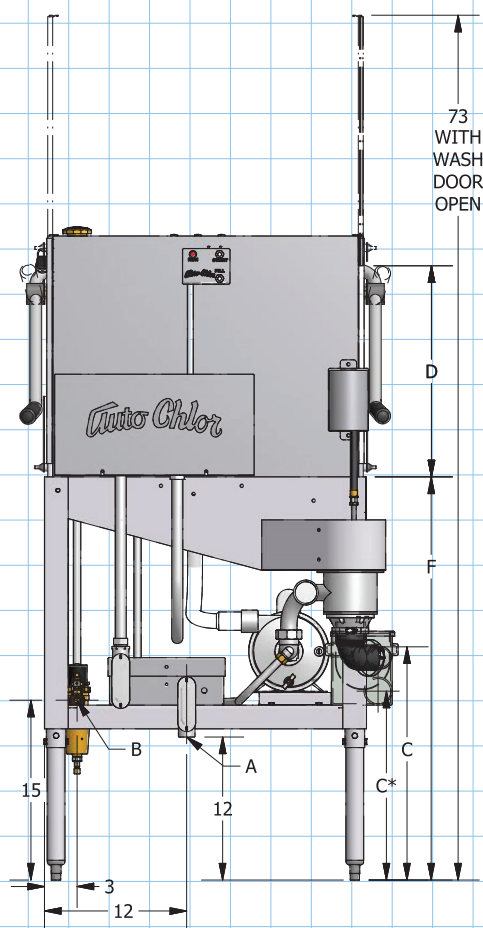
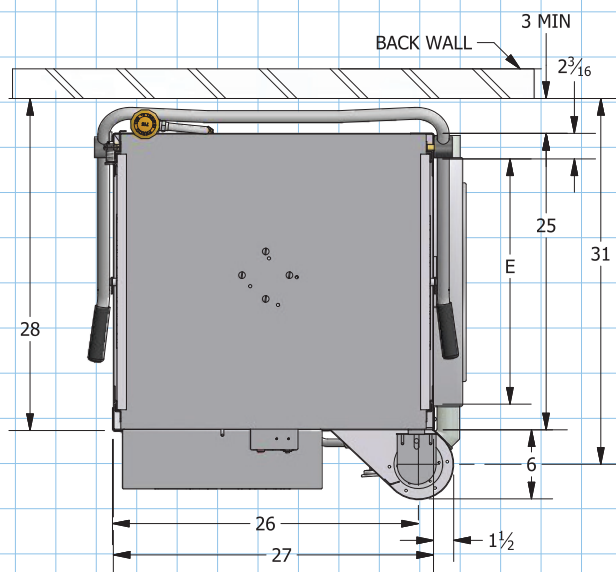
- Auto-Chlor System's proprietary WaterSaver™ design uses as little as 1.09 gallons/rack
- Powerful 1 HP pump delivers high pressure spray and mechanical cleaning action for single pass cleaning performance
- Built in water pressure regulator provides consistent water usage and cleaning results
- Exclusive fill-through-the-pump feature flushes and cleans the wash pump and spray system with every cycle
- External sump and screen provide easy access for cleaning
- Regularly scheduled 28-day service ensures sparkling results, minimizes mechanical problems and reduces operating costs
- Benefiting from more than 75 years of improvements and dishwashing experience and knowledge



## Energy Efficient

- Exceeds Energy Star requirements
- Low temperature chemical sanitizing saves energy

**Total Service.  
Total Satisfaction.**



## Specifications

Standard 90 second cycle, 38 rack/hr

- A
  - Electrical -115 VAC, 60Hz, 1 PH
  - 20A Dedicated Circuit Recommended
  - Connects to Grounded Wall Outlet or ½" Conduit depending on local building codes
- B
  - Water Consumption 1.09 gal/rack (41.3 GPH)
  - Water Supply Flow Rate 7.5 GPM Minimum
  - Water Supply Temp 120°F Minimum
  - Water Supply Connection ½" NPT male
  - Backflow protection provided by ASSE 1004 Vacuum Breaker
- C
  - Drain Connection 2" MPT
  - 20" above floor
- C\*
  - Optional Scrap Accumulator
  - Connection 2" MPT
  - Centerline 15½" above floor
- D
  - Wash Cavity Clearance 17" Max Height
- E
  - Rack Clearance - 20 ⅛" between tracks
  - Rack Size 20" x 20"
- F
  - Table Height at Machine Entrance 34"

Available Options:

- Auto-Start
- Leg Extensions : 3"
- Vapor Removal System (VRX)
- 72 second cycle, 47 Racks/hr, 51 GPH
- 60 second cycle, 55 Racks/hr, 60 GPH
- Tall Hood 27" Max Height Wash Cavity

### Optional Supplemental Water Heaters Available

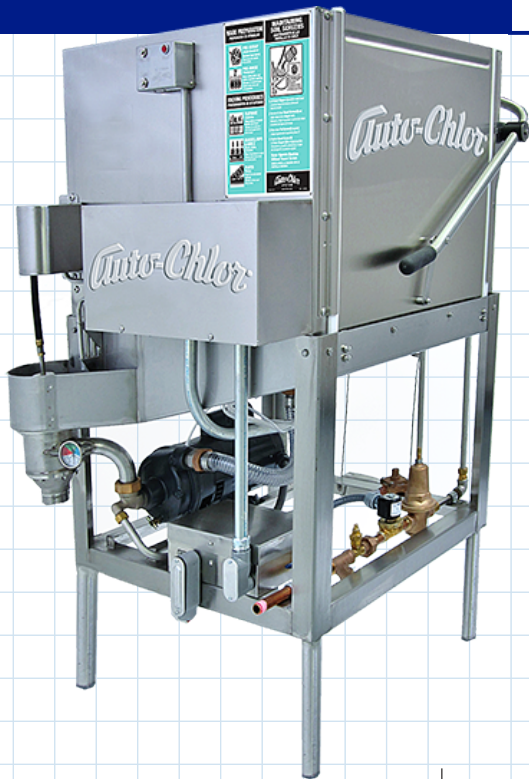
An optional integrated water heating system is available for this model dishmachine. The integrated system mounts within the framework of the machine so no additional floor space is required. The integrated heater is ideal for facilities with insufficient water heating capacity, on-demand style water heaters, or remotely located heaters. The heater can operate on 50A 208-240V circuits using either single or three phase power. Contact your local Auto-Chlor System representative for more information.

Note: This unit does not produce heat or steam

# Total Service.Total Satisfaction.



ACM30001



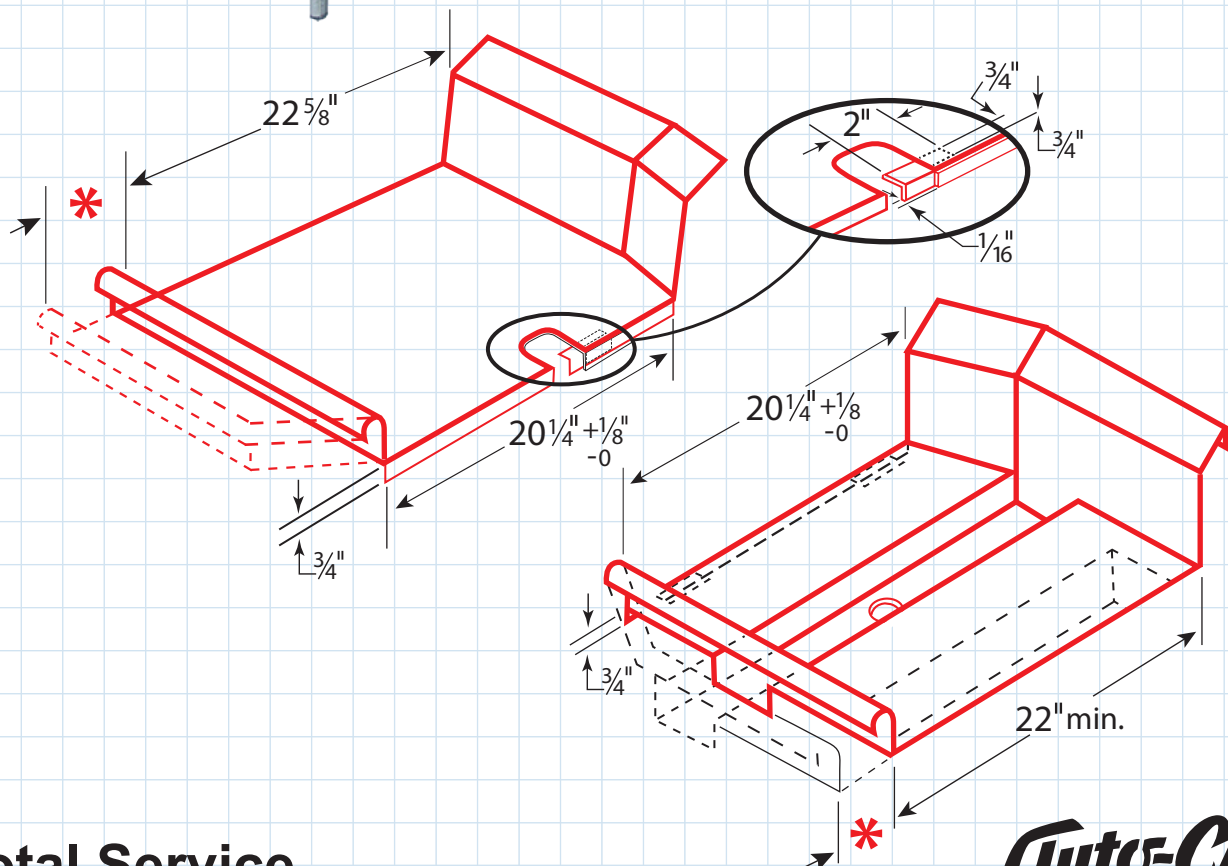
## INLINE TABLE LAYOUT

### Installation Specifications

**\* NOTE:**

Dotted lines show how tables can be made to any desired width. Drain trough and/or pre-wash sink (dotted line) and some type of guide to center racks should be provided in "soiled dish" table.

Drawing shows right-to-left operation. For left-to-right feed, construct tables in reverse.



**Total Service.  
Total Satisfaction.**