



A4 VRX WaterSaver™

- The International Mechanical Code requires TYPE II hoods over commercial dishwashers, except where the heat and moisture loads from such appliances are incorporated into the HVAC system design or into the design of a separate removal system.
- The VRX system eliminates the need for the installation of a Type II Hood over Auto-Chlor commercial dishwashers.
- Reduces installation and construction costs by eliminating the need for a Type II hood.
- Reduces heating and cooling costs by eliminating vent hood make-up air and reducing the moisture and heat in your kitchen.
- Factory installed system features integrated controls and simple single source power supply for easy installation.
- Regularly scheduled 28-day service ensures sparkling results, minimizes mechanical problems and reduces operating costs.
- Benefiting from more than 80 years of improvements and dishwashing experience and knowledge.



Energy Efficient

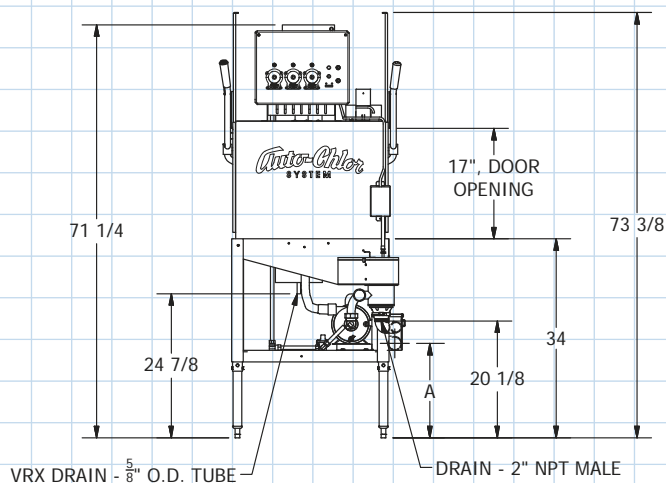
- Exceeds Energy Star requirements
- Low temperature chemical sanitizing saves energy

**Total Service.
Total Satisfaction.**

Auto-Chlor®
SYSTEM
autochlor.com

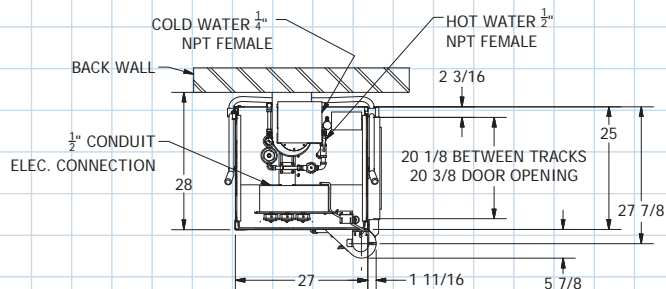
A4 VRX **WaterSaver™**

A4 WaterSaver™



A: OPTIONAL SCRAP ACCUMULATOR DRAIN HEIGHT 15-1/2"

TOP VIEW



Specifications

- Cycle Time: 120 seconds
- Rated capacity: 29 cycles/hour
 - 90 second Wash and Rinse
 - 30 second Vapor Recovery

Electrical -115 VAC, 60Hz, 1 PH

- 20A Dedicated Circuit Recommended
- Connects to Grounded Wall Outlet or ½"
- Conduit depending on local building codes

Water Consumption 1.04 gal/rack (38.4 GPH)

- Water Supply Flow Rate 7.5 GPM Minimum
- 120°F Minimum Water Temperature
- Water Supply Connection ½" NPT male
- Backflow protection provided by ASSE 1001
- Vacuum Breaker

Cold Water Supply Flow Rate: 1 GPM min.

- Consumption Per Rack: 0.4 Gal
- Cold water connection 1/4 FPT

Drain Connection 2" MPT

- 20" above floor
- Optional Scrap Accumulator
- Connection 2" MPT
- Centerline 15½" above floor

VRX Drain Connection: 5/8" O.D. tube

Wash Cavity Clearance 17" Max Height

Rack Clearance - 20" between tracks

- Rack Size 20" x 20"

Table Height at Machine Entrance 34"

Heat Load to Room:

- Latent 2,425 Btu's/hr.
- Sensible 2,398 Btu's/hr.
- Total 4,823 Btu's/hr.



ACM30018 320/23



Auto-Chlor®
SYSTEM
autochlor.com