

Auto-Chlor
SYSTEM

A6 EnergySaver

Single Rack Inline/Corner • High Temp or Chemical Sanitizing

Auto-Chlor brings the HEAT!

- Fast 45 second cycle cleans, rinses and sanitizes up to 72 racks per hour
- NSF rated to use as little as 0.69 gallons/rack
- TempWatch - temperature monitoring system – regulates rinse water to guarantee correct rinse temperatures cycle after cycle
- Capable of being a high temp or chemical sanitizing machine
- Integrated booster heater maintained by Auto-Chlor service technicians
- Three door design allows for use as an inline or corner dishwasher
- Powerful 3 hp pump delivers high pressure spray and mechanical cleaning action for single pass cleaning performance
- Integrated chemical controls and pumps
- Regularly scheduled 28-day service ensures sparkling results, minimizes mechanical problems and reduces operating costs
- Benefiting from more than 80 years of improvements and dishwashing experience and knowledge



Energy Efficient

- Water saving fresh water rinsing saves energy
- Low temperature chemical sanitizing saves even more

**Total Service.
Total Satisfaction.**

Auto-Chlor
SYSTEM
autochlor.com

Corner Configuration

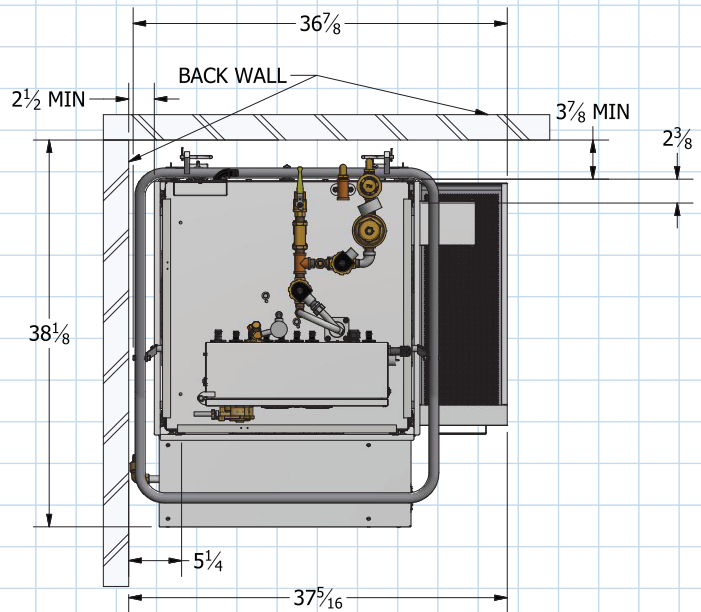
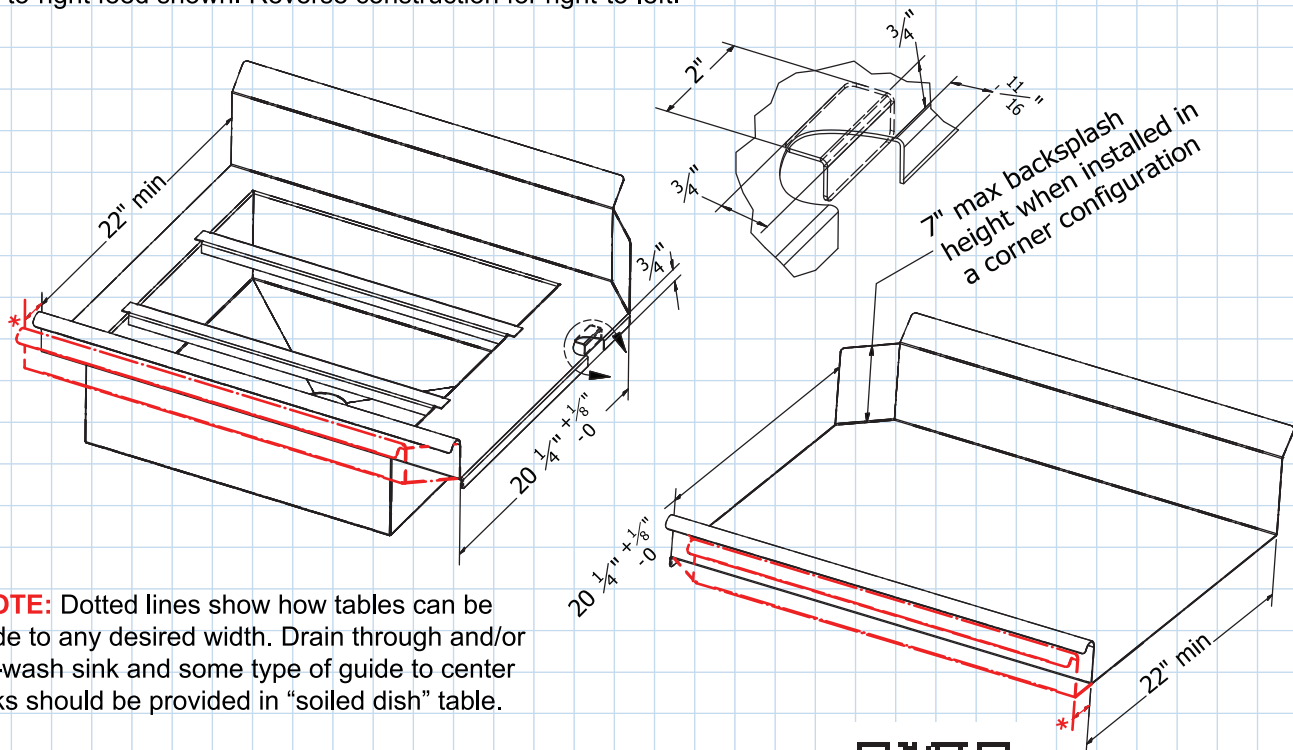


Table Layout

Left-to-right feed shown. Reverse construction for right-to-left.



***NOTE:** Dotted lines show how tables can be made to any desired width. Drain through and/or pre-wash sink and some type of guide to center racks should be provided in "soiled dish" table.

